

Recommended settings for Hardware

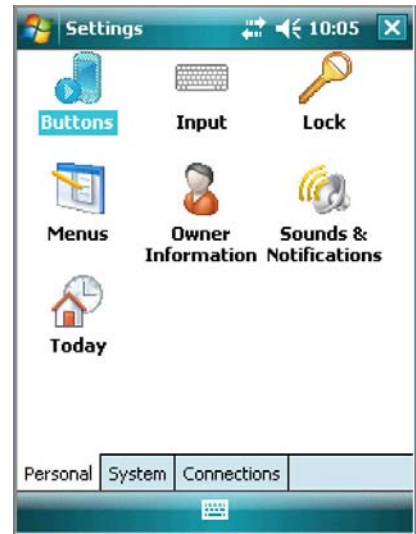
CaddyAid recommend, that after the software has been installed, the following settings be followed for optimum performance.



Press Start icon on the device



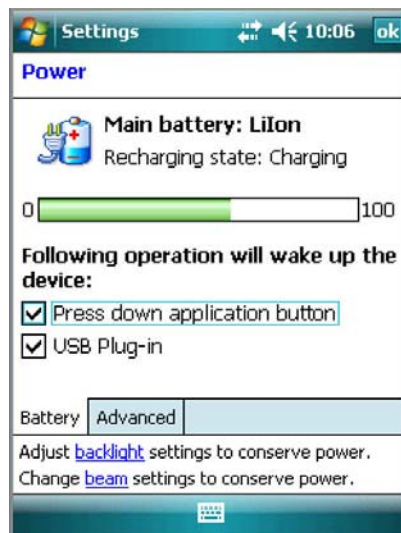
Select Settings



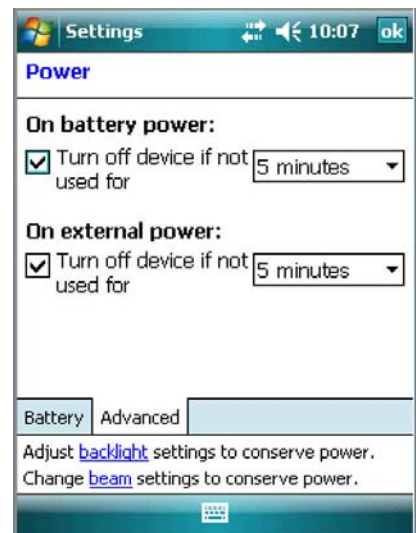
Press the System Tab



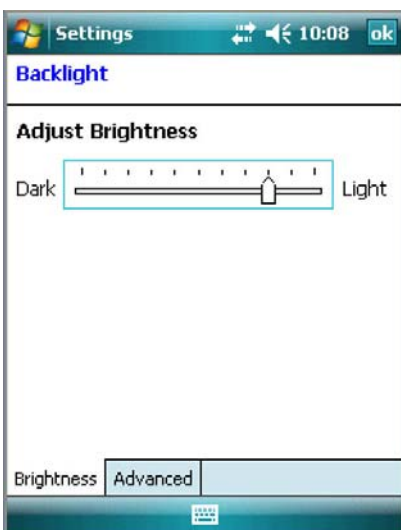
Select Power icon



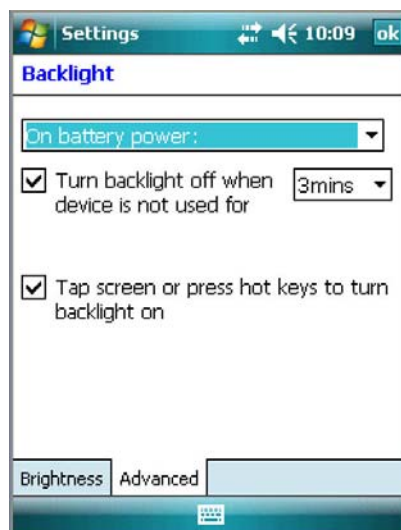
Tick boxes and select Advance tab



Select 5 minutes and press [backlight](#)



Adjust brightness, select Advanced tab



Advanced tab, select 3 minutes and OK

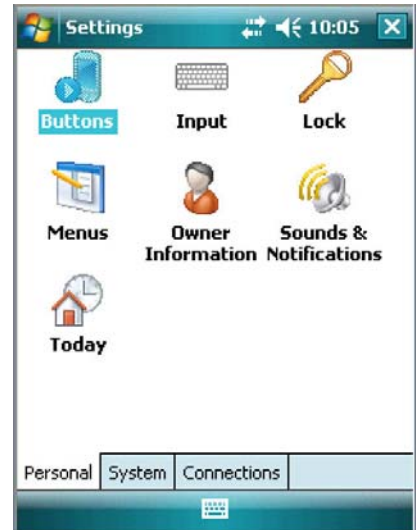
GPS settings on Hardware



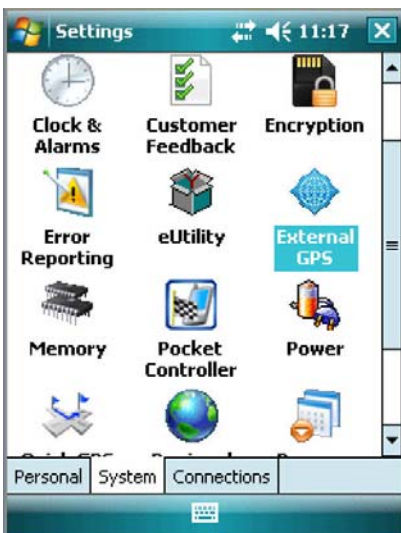
Press Start icon on the device



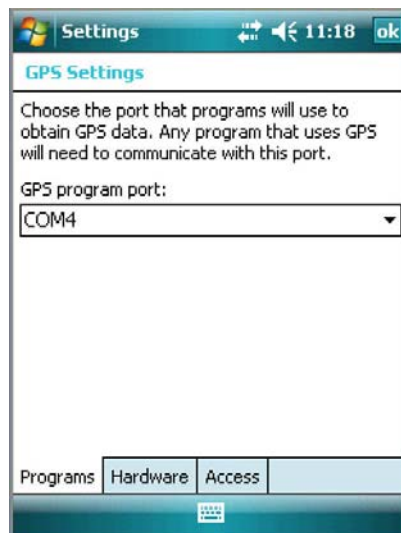
Select Settings



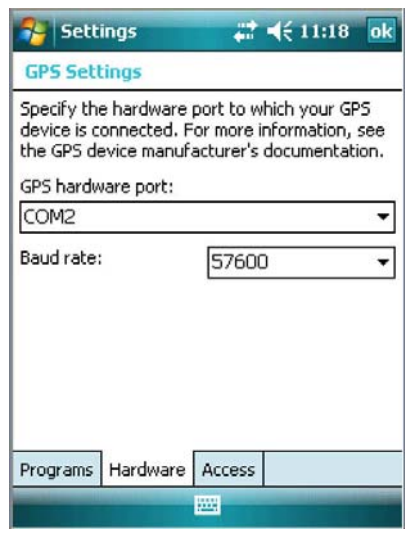
Select the System Tab



System tab, select External GPS icon



Programs tab, select Hardware tab



Hardware tab, select Access tab



Access tab, Tick box and select OK button