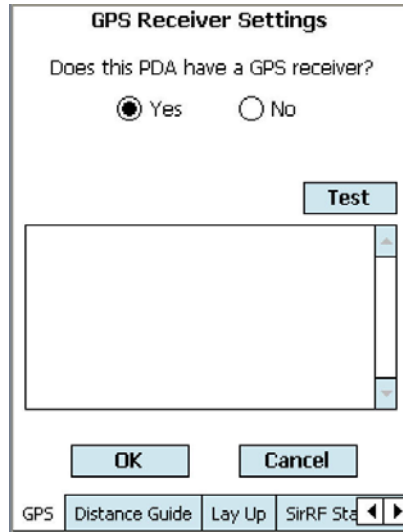


Screenshots for CaddyAid

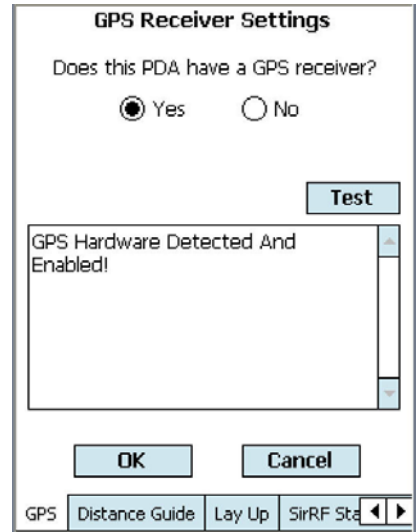
Note, after the course has been loaded into CaddyAid, before play the **GPS Receiver** must be tested first and then the **Sirf Star 3 Configuration**. This only needs to be done once after purchase.



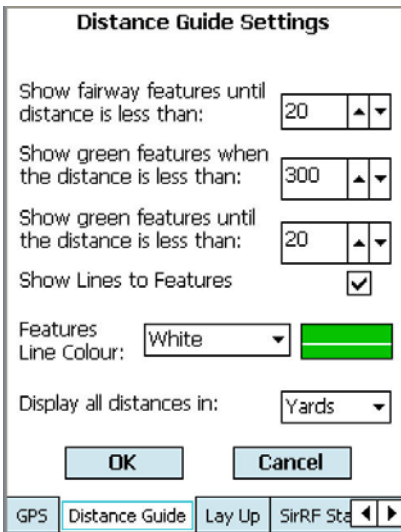
Press Settings



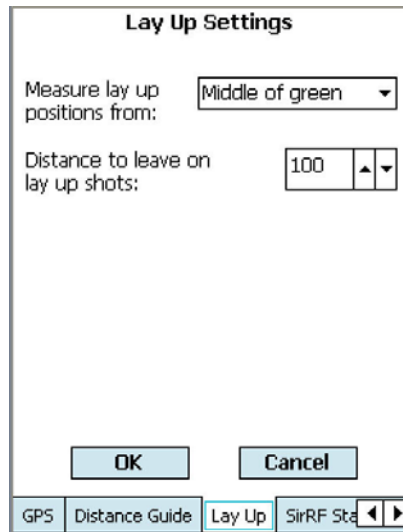
Select test



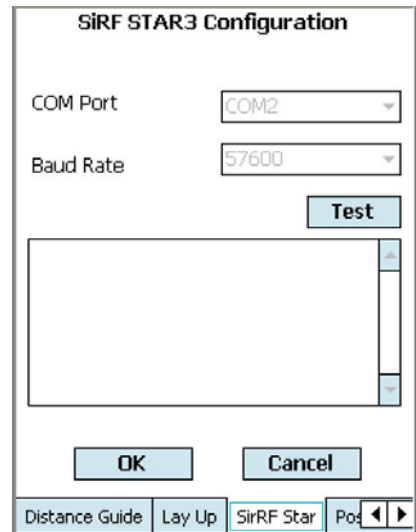
Once enabled, select Distance Guide tab



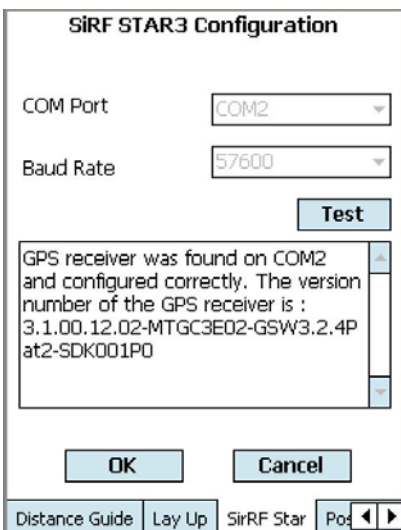
Select preferences, select Lay Up tab



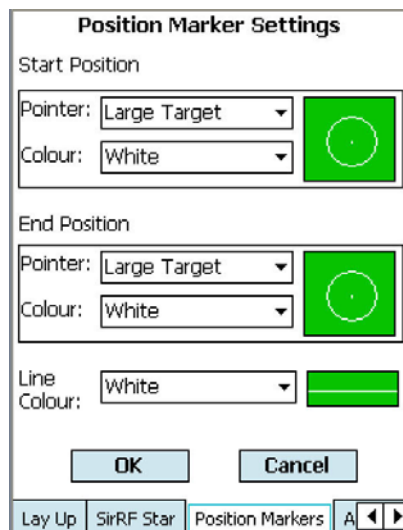
Select preferences, select SiRF tab



Select test



Once found, select Position Markers tab



Select preferences, then OK



Select Course and then Play Course